

**Top Specifications:**

Veneers: Architectural grade veneers. Standards (Walnut, Oak, Maple) Standard veneer layup:

(Walnut - Flat cut (plain sliced) book match), (Oak - Flat cut (plain sliced) book match),

( Maple - Flat cut (plain sliced) Slip match)

Rustic Reclaimed Veneer - Walnut and Oak - Flat cut (plain sliced) Random match

Rustic Reclaimed Core: 1 1/2" thick particle board or Mdf

Core: All tops are fabricated with 1 1/8" thick Industrial grade particleboard 45lb. density or

Mdf (Medium Density Fiberboard)

All tops over 120" are two sections. Veneer grain on multiple section tops is running short grain. (Exception) Rustic Reclaimed Veneer grain runs length wise is random matched unless other wise specified. Laminate woodgrain on multiple section tops is running length wise and is not matched up with grain on other section.

Laminate tops: are fabricated with 1 1/8" thick 45 lb. density particle board core. Laminates are standard colors from **Wilsonart and Formica.**

**Laminates:**

**Standards:**

1572-60 Antique White

1573-60 Frosty White

1595-60 Black

D315-60 Platinum Grey

D354-60 Designer White

D90-60 North Sea

D91-60 Slate Grey

D92-60 Dove Grey

D96-60 Shadow

4841-60 Desert Zephyr

**Woodgrains:**

7909-60 Fusion Maple

7937-38 River Cherry

7946-38 Brazilwood

7997-38 Ebony Recon

7054-60 Wild Cherry

7999k-12 Field Elm

8201k-12 Grey Elm

For all other patterns and laminates, contact factory for pricing and availability

**Custom request (Size, Top, Color, etc.) Contact :**

Cornerstone Furniture, [www.cornerstonefurniture.com](http://www.cornerstonefurniture.com) , ph. (269)795-3379

**Edges:** 3mm (3/16" thick solid hardwood) Flat eased or Reverse bevel.

**Live Edges:** 1 1/2" thick solid hardwoods, Core: 1 1/2" thick particle board or Mdf

**Standard Wood Veneer Finishes:**

Walnut: Natural Walnut, Light Walnut, Brown Walnut, Grey Walnut

White Oak: Natural Oak, Brown Oak, Grey Oak

Maple: Clear Maple, Fusion Maple

Wood is a natural material, slight variations will occur in color, grain configuration, and stain acceptance. Finished pieces may vary slightly in tone or character from the samples given, and no guarantee can be made of an exact match.

Semi-filled finish is standard. Clear Coating : Satin 40 degree sheen , Flat 10 degree sheen

Custom Finish matching is available for a 10% upcharge per order ( \$500.00 minimum list.)

Bases: Rectangular open center with access door and wire management rails. Finishes: To match tops.

**Sample Order:**

(Edge)	Model #.	Shape	Dimensions	Top	Edge	Finish	List \$
(SV3FE)	ETRE48120	- Rectangular	48 x 120	-	White Oak veneer,	# SV3FE , - Grey Oak	\$11059
(SV3FE)	Standard veneer 3mm Flat edge		ETRT48120 - Element table Rectangle, 48" x 120"				

# Element Specs



## Shown in:

Dimensions: 120"l x 48"w x 29"h

Top: Walnut veneer 1.25" thick

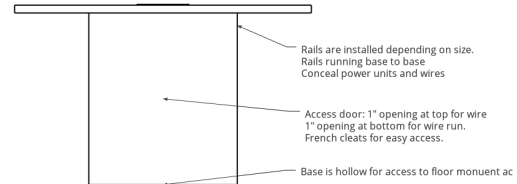
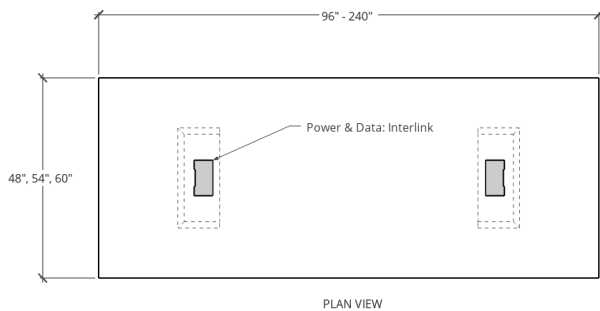
Edge: Knife Edge

Bases: Hollow core panels with access doors and wire management rails (depending on size of top)

Finish: Walnut Grey #WGT

Power & Data: (Interlink) Silver

Custom sizes, woods and finishes are available.  
Contact Cornerstone Furniture to discuss options.



## Specifications

**Dimensions:** 72" - 240" length x 48", 54" and 60" width x 29", 36" and 42" height. Lengths over 120" are two piece tops.

**Tops:** Veneer, Designer Veneer, Laminate. Plain sliced, book or slipped matched, balance backer. 1.25 thick top

**Edges:** Flat eased, Knife edge, Live Edge



**Bases:** A/V hollow core panels with access doors and wire management rails. Ample capacity with access to floor core electrical and telecommunications.

**Finishes:** Check out our finishes in the Price List or contact us for more information.

**Power & Data:** (Interlink) Silver & Black, 2 outlets standard per unit, data plate is standard and sold separately. (data jacks, e.g. USB, VGA, HDMI, Rj45, Rj11, mini Stereo) Please Contact Cornerstone Furniture for specific A/V needs.





# Element Table Series

Dimensions width x depth	Bases	Top Sections	Model #	Standard Veneer	Standard Veneer	Rustic Reclaimed	Rustic Reclaimed	Rustic Reclaimed	
				Top Flat Edge SV3FE	Top Knife Edge SV3KE	Veneer Top Flat Edge RRV3FE	Veneer Top Knife Edge RRV3KE	Veneer Top Live Edge RRVLE	
				List Price \$	List Price \$	List Price \$	List Price \$	List Price \$	
 <p>Rectangle (RE)</p>	48 x 72	2	1	ETRE4872	7500	7685	8860	9293	11234
	48 x 96	2	1	ETRE4896	7475	7780	8305	8645	13375
	48 x 120	3	2	ETRE48120	11059	11453	12288	12725	17961
	48 x 144	3	2	ETRE48144	11901	12350	13233	13722	20125
	48 x 168	3	2	ETRE48168	12743	13247	14159	14719	22294
	48 x 192	4	2	ETRE48192	13585	14144	19217	20081	24448
	48 x 216	4	2	ETRE48216	17428	17990	19365	19988	29198
	48 x 240	4	2	ETRE48240	18189	18805	20215	20895	31369
	60 x 96	2	1	ETRE6096	8553	8884	9503	9871	15637
	60 x 120	3	2	ETRE60120	12595	13016	13994	14463	20973
	60 x 144	3	2	ETRE60144	13618	14095	15131	15661	23436
	60 x 168	3	2	ETRE60168	14642	15174	16268	16860	25894
	60 x 192	4	2	ETRE60192	15665	16252	17406	18058	28345
	60 x 216	4	2	ETRE60216	19720	20307	21912	22563	33845
	60 x 240	4	2	ETRE60240	20651	21287	22945	23653	36313
	 <p>Boat (BT)</p>	48 x 72	2	1	ETBT4872	7500	7685	8860	9513
48 x 96		2	1	ETBT4896	8203	8562	9115	9513	x
48 x 120		3	2	ETBT48120	121360	12591	13477	13990	x
48 x 144		3	2	ETBT48144	13116	13642	14575	15158	x
48 x 168		3	2	ETBT48168	14103	14694	15670	16326	x
48 x 192		4	2	ETBT48192	14496	15152	16107	16836	x
48 x 216		4	2	ETBT48216	19004	19701	21160	21890	x
48 x 240		4	2	ETBT48240	19941	20657	22156	22952	x
60 x 96		2	1	ETBT6096	9404	9792	10449	10880	x
60 x 120		3	2	ETBT60120	12894	13388	14327	14876	x
60 x 144		3	2	ETBT60144	14094	14652	15659	16280	x
60 x 168		3	2	ETBT60168	15293	15916	16992	17684	x
60 x 192		4	2	ETBT60192	16492	17180	18324	19089	x
60 x 216		4	2	ETBT60216	21602	22289	24002	24766	x
60 x 240		4	2	ETBT60240	22692	23438	25214	26042	x



Add 10% to Pricelist

# Element Table Series

	Dimensions width x depth	Bases	Top Sections	Model #	Standard Veneer	Standard Veneer	Rustic Reclaimed	Rustic Reclaimed	Rusti Reclaimed
					Top Flat Edge SV3FE	Top Knife Edge SV3KE	Veneer Top Flat Edge RRV3FE	Veneer Top Knife Edge RRV3KE	Veneer Top Live Edge RRVLE
					List Price \$	List Price \$	List Price \$	List Price \$	List Price \$
 Racetrack (RT)	48 x 72	2	1	ETRT4872	7500	7685	8860	9513	x
	48 x 96	2	1	ETRT4896	8203	8562	9115	9513	x
	48 x 120	3	2	ETRT48120	121360	12591	13477	13990	x
	48 x 144	3	2	ETRT48144	13116	13642	14575	15158	x
	48 x 168	3	2	ETRT48168	14103	14694	15670	16326	x
	48 x 192	4	2	ETRT48192	14496	15152	16107	16836	x
	48 x 216	4	2	ETRT48216	19004	19701	21160	21890	x
	48 x 240	4	2	ETRT48240	19941	20657	22156	22952	x
	60 x 96	2	1	ETRT6096	9404	9792	10449	10880	x
	60 x 120	3	2	ETRT60120	12894	13388	14327	14876	x
	60 x 144	3	2	ETRT60144	14094	14652	15659	16280	x
	60 x 168	3	2	ETRT60168	15293	15916	16992	17684	x
	60 x 192	4	2	ETRT60192	16492	17180	18324	19089	x
	60 x 216	4	2	ETRT60216	21602	22289	24002	24766	x
	60 x 240	4	2	ETRT60240	22692	23438	25214	26042	x
	 Arced End Rectangle (AR)	48 x 72	2	1	ETAR4872	7500	7685	8860	9513
48 x 96		2	1	ETAR4896	8203	8562	9115	9513	x
48 x 120		3	2	ETAR48120	121360	12591	13477	13990	x
48 x 144		3	2	ETAR48144	13116	13642	14575	15158	x
48 x 168		3	2	ETAR48168	14103	14694	15670	16326	x
48 x 192		4	2	ETAR48192	14496	15152	16107	16836	x
48 x 216		4	2	ETAR48216	19004	19701	21160	21890	x
48 x 240		4	2	ETAR48240	19941	20657	22156	22952	x
60 x 96		2	1	ETAR6096	9404	9792	10449	10880	x
60 x 120		3	2	ETAR60120	12894	13388	14327	14876	x
60 x 144		3	2	ETAR60144	14094	14652	15659	16280	x
60 x 168		3	2	ETAR60168	15293	15916	16992	17684	x
60 x 192		4	2	ETAR60192	16492	17180	18324	19089	x
60 x 216		4	2	ETAR60216	21602	22289	24002	24766	x
60 x 240		4	2	ETAR60240	22692	23438	25214	26042	x


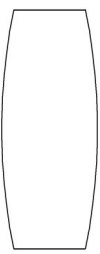
Add 10% to Pricelist

# Element Table Series

Dimensions width x depth	Bases	Top Sections	Model #	Standard Laminate	Standard Laminate		
				Top Flat Edge SV3FE List Price \$	Top Knife Edge SV3KE List Price \$		
 Rectangle (RE)	48 x 72	2	1	ETRE4872	4890	6980	
	48 x 96	2	1	ETRE4896	5155	7232	
	48 x 120	3	2	ETRE48120	7265	10542	
	48 x 144	3	2	ETRE48144	8126	11526	
	48 x 168	3	2	ETRE48168	8909	12480	
	48 x 192	4	2	ETRE48192	9496	13362	
	48 x 216	4	2	ETRE48216	13194	17227	
	48 x 240	4	2	ETRE48240	14368	18266	
	60 x 96	2	1	ETRE6096	5824	8272	
	60 x 120	3	2	ETRE60120	8131	11973	
	60 x 144	3	2	ETRE60144	8719	12988	
	60 x 168	3	2	ETRE60168	9501	14075	
	60 x 192	4	2	ETRE60192	10284	15162	
	60 x 216	4	2	ETRE60216	14326	19270	
	60 x 240	4	2	ETRE60240	15109	20285	
	 Arced End Rectangle (AR)	48 x 72	2	1	ETAR4872	5354	7981
		48 x 96	2	1	ETAR4896	5880	8272
		48 x 120	3	2	ETAR48120	8005	11213
48 x 144		3	2	ETAR48144	8450	12067	
48 x 168		3	2	ETAR48168	9044	12947	
48 x 192		4	2	ETAR48192	9935	13876	
48 x 216		4	2	ETAR48216	13640	17707	
48 x 240		4	2	ETAR48240	14233	18515	
60 x 96		2	1	ETAR6096	6474	8459	
60 x 120		3	2	ETAR60120	9340	12793	
60 x 144		3	2	ETAR60144	9933	13829	
60 x 168		3	2	ETAR60168	10527	14864	
60 x 192		4	2	ETAR60192	11121	15899	
60 x 216		4	2	ETAR60216	14974	19904	
60 x 240		4	2	ETAR60240	15568	20854	

Add 10% to Pricelist

# Element Table Series

	Dimensions width x depth	Bases	Top Sections	Model #	Standard Laminate	Standard Laminate	
					Top Flat Edge SV3FE List Price \$	Top Knife Edge SV3KE List Price \$	
 Racetrack (RT)	48 x 72	2	1	ETRT4872	5354	7981	
	48 x 96	2	1	ETRT4896	5880	8272	
	48 x 120	3	2	ETRT48120	8005	11213	
	48 x 144	3	2	ETRT48144	8450	12067	
	48 x 168	3	2	ETRT48168	9044	12947	
	48 x 192	4	2	ETRT48192	9935	13876	
	48 x 216	4	2	ETRT48216	13640	17707	
	48 x 240	4	2	ETRT48240	14233	18515	
	60 x 96	2	1	ETRT6096	6474	8459	
	60 x 120	3	2	ETRT60120	9340	12793	
	60 x 144	3	2	ETRT60144	9933	13829	
	60 x 168	3	2	ETRT60168	10527	14864	
	60 x 192	4	2	ETRT60192	11121	15899	
	60 x 216	4	2	ETRT60216	14974	19904	
	60 x 240	4	2	ETRT60240	15568	20854	
	 Boat (BT)	48 x 72	2	1	ETBT4872	5354	7981
		48 x 96	2	1	ETBT4896	5880	8272
		48 x 120	3	2	ETBT48120	8005	11213
48 x 144		3	2	ETBT48144	8450	12067	
48 x 168		3	2	ETBT48168	9044	12947	
48 x 192		4	2	ETBT48192	9935	13876	
48 x 216		4	2	ETBT48216	13640	17707	
48 x 240		4	2	ETBT48240	14233	18515	
60 x 96		2	1	ETBT6096	6474	8459	
60 x 120		3	2	ETBT60120	9340	12793	
60 x 144		3	2	ETBT60144	9933	13829	
60 x 168		3	2	ETBT60168	10527	14864	
60 x 192		4	2	ETBT60192	11121	15899	
60 x 216		4	2	ETBT60216	14974	19904	
60 x 240		4	2	ETBT60240	15568	20854	

Add 10% to Pricelist